	Lecture	Datenbanken und Informationssysteme
		Dial-In Instructions
	Hand Out	Week No. 14
	Hand In	--

Dial-In Instructions for DIS Exercises

A dial in to the VPN is required to connect to the database and the VSIS-Workstations.

In the first step you should therefore set up a VPN access.

A "How to" in English is available for [Windows 7](#) and [Linux](#).

SSH-Dial-In

For the connection to the VSIS-Workstations, you need an SSH client. The following description is based on [PuTTY](#), which is available for free.

Start PuTTY and make the configurations shown below:

1. Define the target workstation.

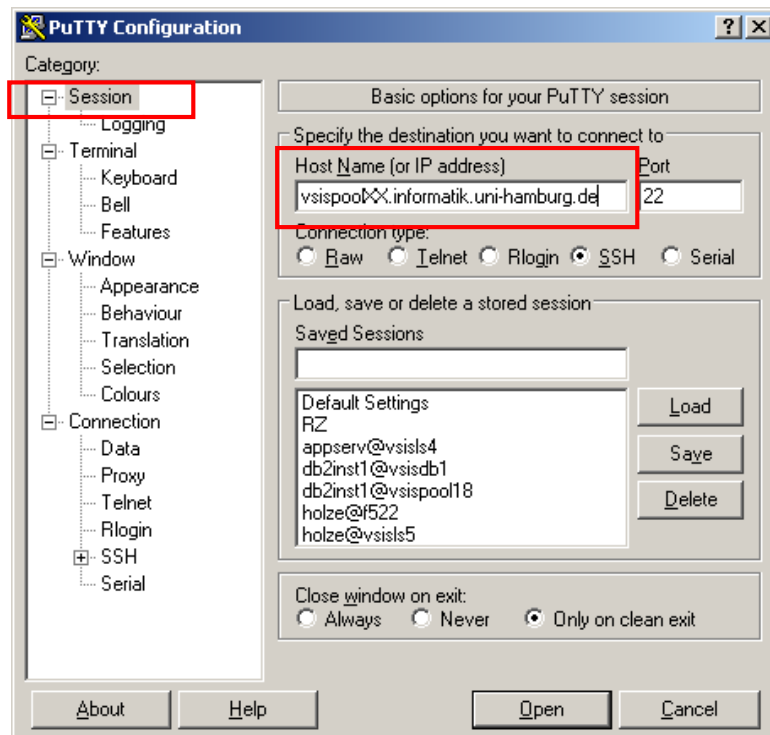
The names of the workstations are:


vsispool10.informatik.uni-hamburg.de

vsispool11.informatik.uni-hamburg.de

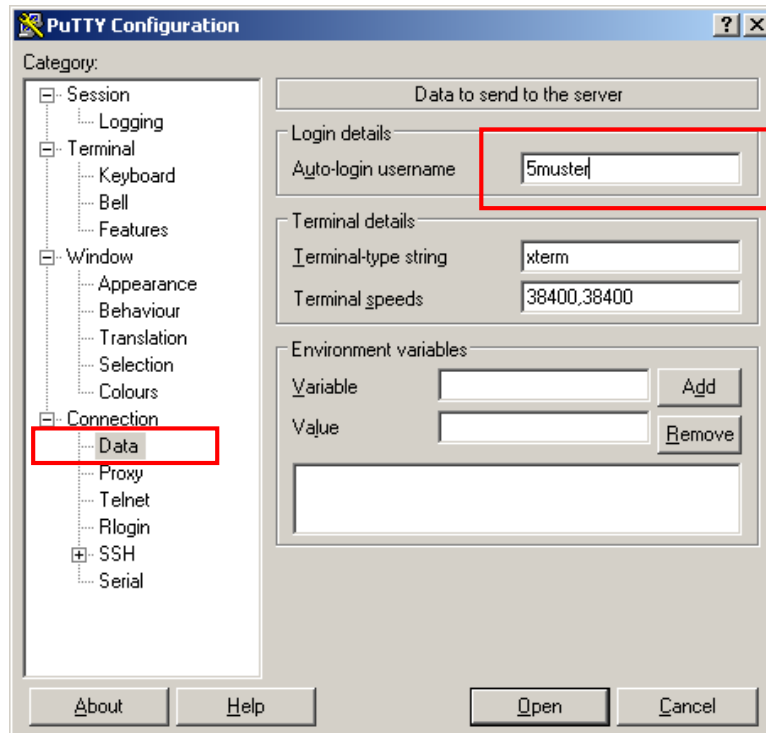
...

vsispool19.informatik.uni-hamburg.de



	Lecture	Datenbanken und Informationssysteme
		Dial-In Instructions
	Hand Out	Week No. 14
	Hand In	--

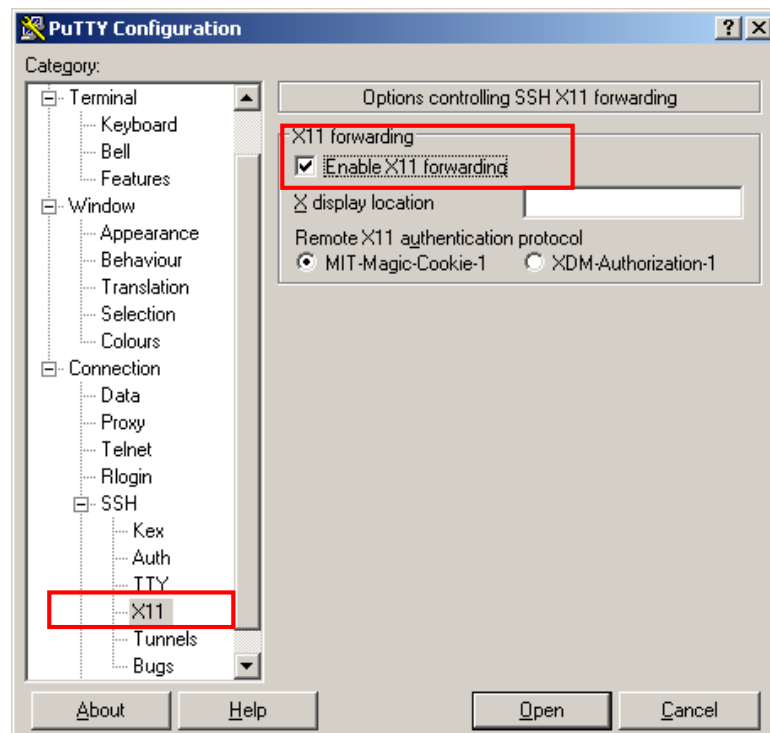
2. Enter your user name (RZ-login).




3. If you want to use graphical editors on the workstations, enable X11 forwarding.

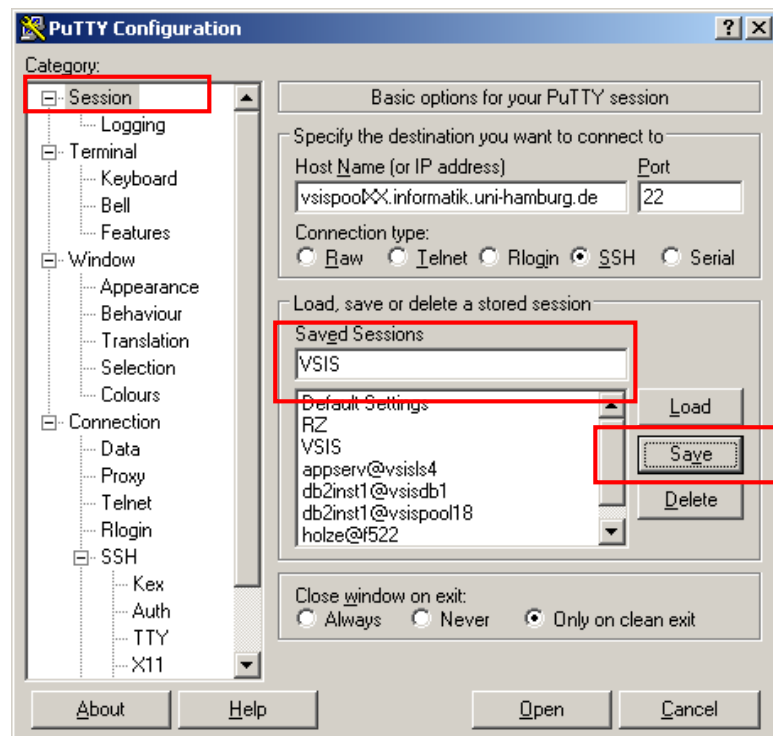
Caution: Please don't run Eclipse, SquirrelL or similar on the workstations.

Note: you need of course a client-side X server (Windows: e.g. FreeXer)



	Lecture	Datenbanken und Informationssysteme
		Dial-In Instructions
	Hand Out	Week No. 14
	Hand In	--

4. Finally, save the configuration under any name.



5. Connect to the specified workstation by clicking on the open button and enter the requested password.
6. If your login shell is not bash or ksh, start such by typing bash on the command line.
7. Set up your DB2 environment by running the following command:


```
. /homeLocal/db2inst1/sqllib/db2profile
```

For transferring files between the workstations and your local computer, you need an SCP client, e.g. WinSCP: <http://winscp.net/eng/docs/lang:de>

JDB access via JDBC


You can also connect directly to the DB2 with a suitable DB-client (out of the VPN).

1. Please download first the [JDBC driver for DB2](#). You need both files:

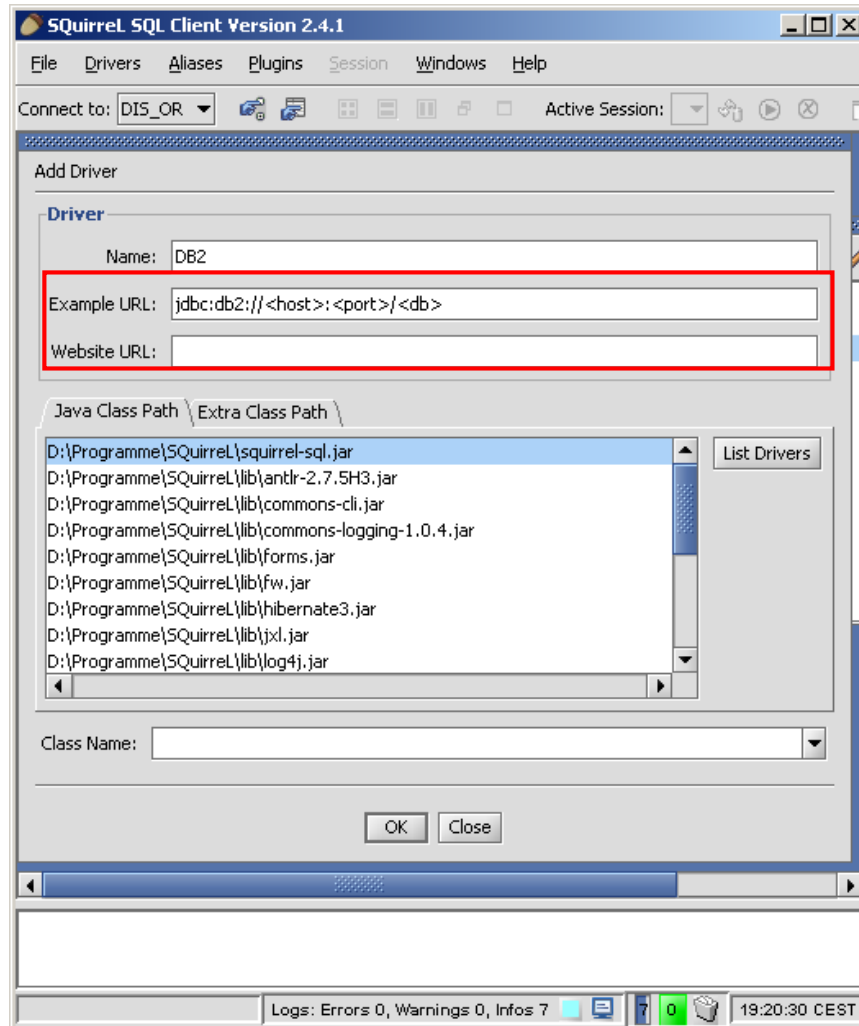
```
db2jcc.jar
db2jcc_license_cu.jar
```


This driver do not require any additional DB2 client installation.

2. Download [SQuireL](#) and install it.

	Lecture	Datenbanken und Informationssysteme
		Dial-In Instructions
	Hand Out	Week No. 14
	Hand In	--

- Start Squirrel, click the driver button on the left side, add a new driver with the “+” button and enter the following information into the Fields “Name” and “Example URL”:

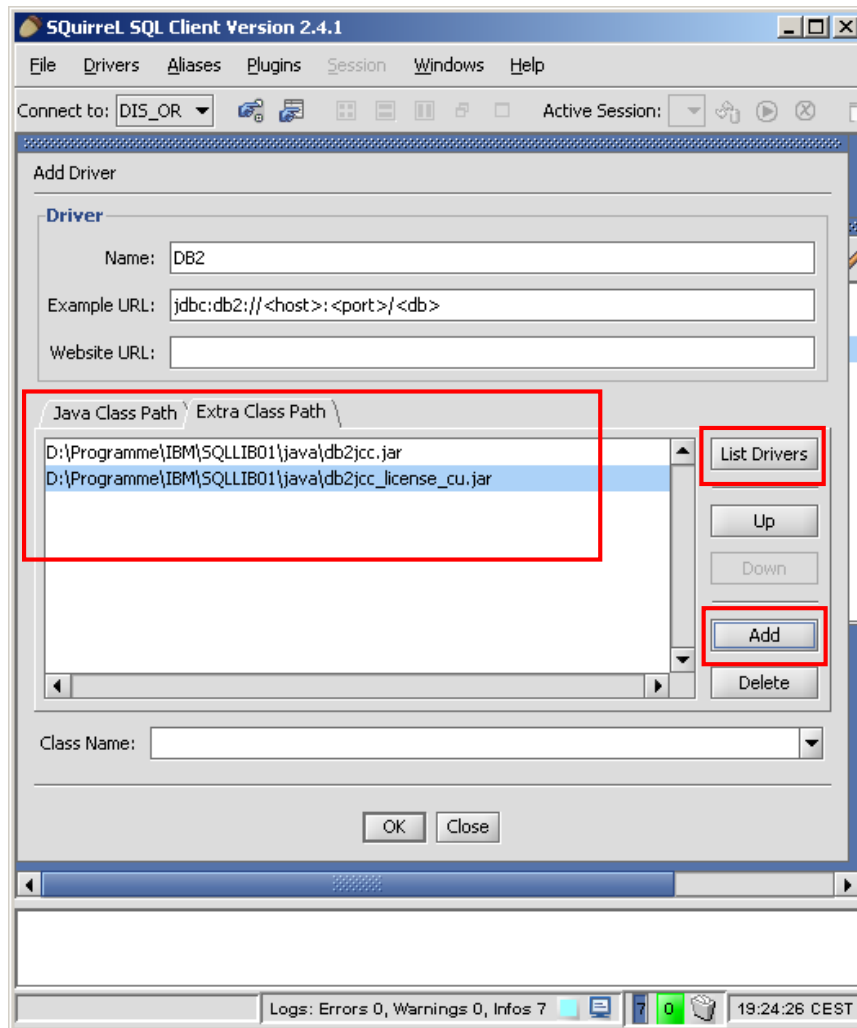



	Lecture	Datenbanken und Informationssysteme
		Dial-In Instructions
	Hand Out	Week No. 14
	Hand In	--

4. Click on the tab "Extra Class Path" and add the both files:

```
db2jcc.jar
db2jcc_license_cu.jar
```

Then, click the "List Drivers" button on the right and confirm by clicking OK.



	Lecture	Datenbanken und Informationssysteme
		Dial-In Instructions
	Hand Out	Week No. 14
	Hand In	--

5. Set up the connection to the database, by clicking the aliases button on the left side and adding a connection using the “+”-button. Enter the following values in the pop up window:

Name: VSISP

Driver: DB2

URL:

jdbc:db2://vsisls4.informatik.uni-hamburg.de:50001/VSISP

User Name: vsispXX

Password: *****

Then connect to the VSISP database.

