



Administration of WMQ Queue Managers and Queues



WebSphere software

© 2007 IBM Corporation

IBM Software Group | WebSphere software



Overview

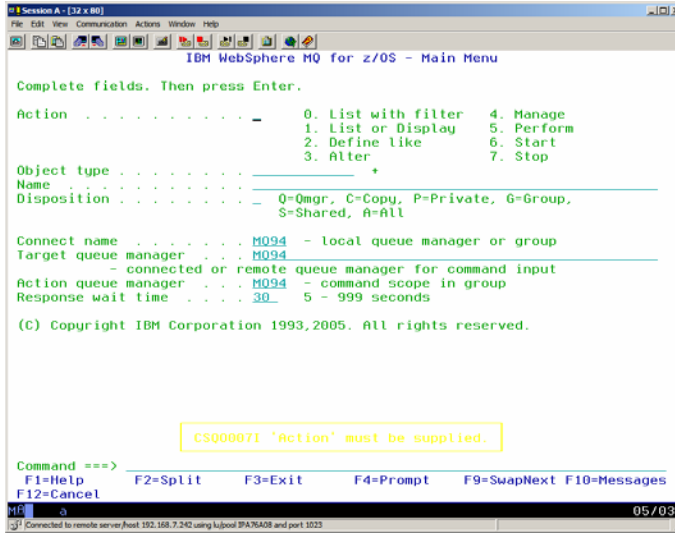
- WebSphere MQ can be administered by using
 - WMQ ISPF Panels
 - SCSQEXEC(CSQOREXX)
 - set up ISPF menu option
 - WMQ Explorer (Eclipse-based tool)
 - WMQ Support Pacs
 - ISPF Utilities Collection
 - CSQUTIL



2



ISPF - Main Menu



```

Session A - [32 x 80]
File Edit View Communication Actions Window Help
IBM WebSphere MQ for z/OS - Main Menu

Complete fields. Then press Enter.

Action . . . . . - 0. List with filter 4. Manage
                  1. List or Display 5. Perform
                  2. Define like 6. Start
                  3. Alter 7. Stop

Object type . . . . . *
Name . . . . .
Disposition . . . . . - Q=Qmgr, C=Copy, P=Private, G=Group,
                      S=Shared, A=All

Connect name . . . . . M094 - local queue manager or group
Target queue manager . . . . . M094
                        - connected or remote queue manager for command input
Action queue manager . . . . . M094 - command scope in group
Response wait time . . . . . 30 5 - 999 seconds

(C) Copyright IBM Corporation 1993,2005. All rights reserved.

CS00007I 'Action' must be supplied.

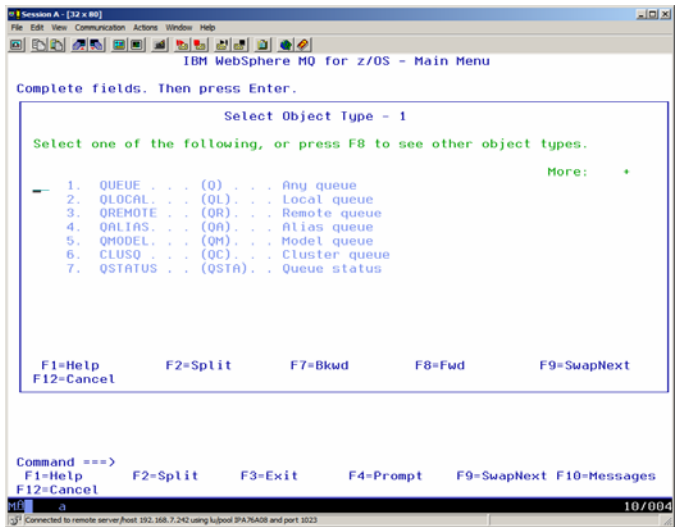
Command ==>
F1=Help F2=Split F3=Exit F4=Prompt F9=SwapNext F10=Messages
F12=Cancel

10/030
Connected to remote server/jesit.392.168.7.242 using Subpool 3FA76A08 and port 1023

```



ISPF - Object Types



```

Session A - [32 x 80]
File Edit View Communication Actions Window Help
IBM WebSphere MQ for z/OS - Main Menu

Complete fields. Then press Enter.

Select Object Type - 1

Select one of the following, or press F8 to see other object types.

More: *
- 1. QUEUE . . . (Q) . . Any queue
  2. QLOCAL . . (QL) . . Local queue
  3. QREMOTE . . (QR) . . Remote queue
  4. QALIAS . . (QA) . . Alias queue
  5. QMODEL . . (QM) . . Model queue
  6. CLUSQ . . (QC) . . Cluster queue
  7. QSTATUS . . (QSTA) . Queue status

F1=Help F2=Split F7=Bkwd F8=Fwd F9=SwapNext
F12=Cancel

Command ==>
F1=Help F2=Split F3=Exit F4=Prompt F9=SwapNext F10=Messages
F12=Cancel

10/004
Connected to remote server/jesit.392.168.7.242 using Subpool 3FA76A08 and port 1023

```



ISPF – Display Queues

```

IBM Session A - [32 x 80]
File Edit View Communication Actions Window Help
List Queues - M094 Row 1 of 101

Type action codes, then press Enter. Press F11 to display queue status.
1=Display 2=Define like 3=Alter 4=Manage

Name                                     Type      Disposition
<> *
-- AMRq1                                 QUEUE    PRIVATE M094
-- SIB1WAS91                             QLOCAL  QMGR M094
-- SYSTEM.ADMIN.ACTIVITY.QUEUE           QLOCAL  QMGR M094
-- SYSTEM.ADMIN.CHANNEL.EVENT            QLOCAL  QMGR M094
-- SYSTEM.ADMIN.COMMAND.EVENT            QLOCAL  QMGR M094
-- SYSTEM.ADMIN.COMMAND.QUEUE            QALIAS  QMGR M094
-- SYSTEM.ADMIN.CONFIG.EVENT             QLOCAL  QMGR M094
-- SYSTEM.ADMIN.PERFM.EVENT              QLOCAL  QMGR M094
-- SYSTEM.ADMIN.QMGR.EVENT               QLOCAL  QMGR M094
-- SYSTEM.ADMIN.TRACE.ROUTE.QUEUE        QLOCAL  QMGR M094
-- SYSTEM.BROKER.ADAPTER.FAILED           QLOCAL  QMGR M094
-- SYSTEM.BROKER.ADAPTER.INPROGRESS      QLOCAL  QMGR M094
-- SYSTEM.BROKER.ADAPTER.NEW             QLOCAL  QMGR M094
-- SYSTEM.BROKER.ADAPTER.PROCESSED       QLOCAL  QMGR M094
-- SYSTEM.BROKER.ADAPTER.UNKNOWN        QLOCAL  QMGR M094
-- SYSTEM.BROKER.ADMIN.QUEUE            QLOCAL  QMGR M094
-- SYSTEM.BROKER.ADMIN.REPLY            QLOCAL  QMGR M094
-- SYSTEM.BROKER.AGGR.CONTROL           QLOCAL  QMGR M094
-- SYSTEM.BROKER.AGGR.REPLY             QLOCAL  QMGR M094
-- SYSTEM.BROKER.AGGR.REQUEST           QLOCAL  QMGR M094

Command ==>
F1=Help      F2=Split    F3=Exit     F4=Filter    F5=Refresh   F6=Clusinfo
F7=Bkwd     F8=Fwd      F9=SwapNext F10=Messages F11=Status   F12=Cancel
M094 a 30/015
    
```



ISPF – List with Filters (Display)

```

IBM Session A - [32 x 80]
File Edit View Communication Actions Window Help
IBM WebSphere MQ For z/OS - Main Menu

Complete fields. Then press Enter.
Action . . . . . 0 List with filter 4. Manage
                1. List or Display 5. Perform
                2. Define like    6. Start
                3. Alter          7. Stop

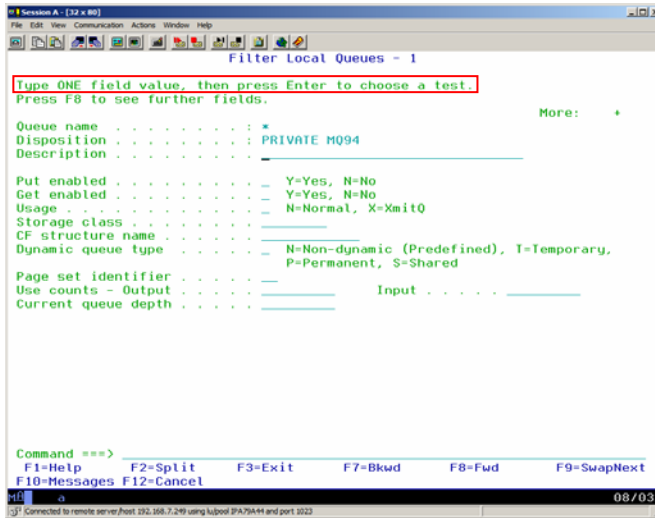
Object type . . . . . 0 +
Name . . . . . *
Disposition . . . . . 0=Qmgr, C=Copy, P=Private, G=Group,
                    S=Shared, A=All

Connect name . . . . . M094 - local queue manager or group
Target queue manager . . . . . M094
- connected or remote queue manager for command input
Action queue manager . . . . . M094 - command scope in group
Response wait time . . . . . 30 5 - 999 seconds

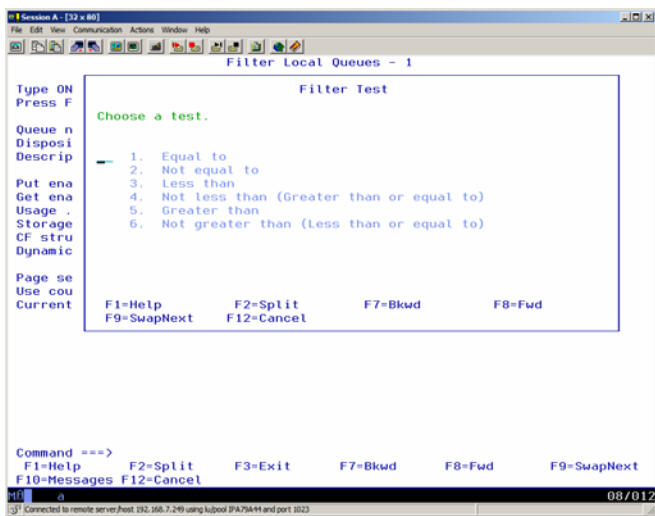
(C) Copyright IBM Corporation 1993,2005. All rights reserved.

Command ==>
F1=Help      F2=Split    F3=Exit     F4=Prompt    F9=SwapNext  F10=Messages
F12=Cancel
M094 a 09/031
    
```

ISPF – List with Filters (Display)



ISPF – List with Filters - Operators



- WMQ offers different filters depending on the selected object type



ISPF – Display Queues

Session A - [32 x 80] Row 1 of 101

List Queues - M094

Type action codes, then press Enter. Press F11 to display queue status.
 1=Display 2=Define like 3=Alter 4=Manage

Name	Type	Disposition
<>	QUEUE	PRIVATE M094
AMRq1	QREMOTE	QMGR M094
SIB1WAS91	QLOCAL	QMGR M094
SYSTEM.ADMIN.ACTIVITY.QUEUE	QLOCAL	QMGR M094
SYSTEM.ADMIN.CHANNEL.EVENT	QLOCAL	QMGR M094
SYSTEM.ADMIN.COMMAND.EVENT	QLOCAL	QMGR M094
SYSTEM.ADMIN.COMMAND.QUEUE	QALIAS	QMGR M094
SYSTEM.ADMIN.CONFIG.EVENT	QLOCAL	QMGR M094
SYSTEM.ADMIN.PERFM.EVENT	QLOCAL	QMGR M094
SYSTEM.ADMIN.QMGR.EVENT	QLOCAL	QMGR M094
SYSTEM.ADMIN.TRACE.ROUTE.QUEUE	QLOCAL	QMGR M094
SYSTEM.BROKER.ADAPTER.FAILED	QLOCAL	QMGR M094
SYSTEM.BROKER.ADAPTER.INPROGRESS	QLOCAL	QMGR M094
SYSTEM.BROKER.ADAPTER.NEW	QLOCAL	QMGR M094
SYSTEM.BROKER.ADAPTER.PROCESSED	QLOCAL	QMGR M094
SYSTEM.BROKER.ADAPTER.UNKNOWN	QLOCAL	QMGR M094
SYSTEM.BROKER.ADMIN.QUEUE	QLOCAL	QMGR M094
SYSTEM.BROKER.ADMIN.REPLY	QLOCAL	QMGR M094
SYSTEM.BROKER.AGGR.CONTROL	QLOCAL	QMGR M094
SYSTEM.BROKER.AGGR.REPLY	QLOCAL	QMGR M094
SYSTEM.BROKER.AGGR.REQUEST	QLOCAL	QMGR M094

Command ==>

F1=Help F2=Split F3=Exit F4=Filter F5=Refresh F6=Clusinfo
 F7=Bkwd F8=Fwd F9=SwapNext F10=Messages F11=Status F12=Cancel

30/015



ISPF – Display Queue

1 TEST_Q1 QMGR M094 YY N NF

Session A - [32 x 80] Display a Local Queue - 1

Press F8 to see further fields, or Enter to refresh details.

Queue name TEST_Q1 More: +

Disposition QMGR M094

Description

Put enabled Y Y=Yes, N=No

Get enabled Y Y=Yes, N=No

Usage N N=Normal, X=XmitQ

Storage class DEFAULT

CF structure name

Dynamic queue type N N=Non-dynamic (Predefined), T=Temporary,
 P=Permanent, S=Shared

Page set identifier 4

Use counts - Output 0 Input 0

Current queue depth 2

Command ==>

F1=Help F2=Split F3=Exit F6=Clusinfo F7=Bkwd F8=Fwd
 F9=SwapNext F10=Messages F11=Appls F12=Cancel

06/032

ISPF – Define a new Local Queue

Type action codes, then press Enter. Press F11 to display queue status.
 1=Display 2=Define Like 3=Alter 4=Manage

Name	Type	Disposition
SYSTEM_IP13_PUBSUB_IN	QUEUE	PRIVATE M094
SYSTEM_IP13_PUBSUB_OUT	QLOCAL	QMGR M094
SYSTEM_IP13_REPLY	QLOCAL	QMGR M094
SYSTEM_IP13_REQUEST	QLOCAL	QMGR M094
SYSTEM_IP13_TOPUBSUB	QLOCAL	QMGR M094
SYSTEM_IP13_VSRM_ERROR	QLOCAL	QMGR M094
SYSTEM_IP13_VSRM_IN	QLOCAL	QMGR M094
SYSTEM_IP13_XSLT_IN	QLOCAL	QMGR M094
SYSTEM_IP13_XSLT_INPUT	QLOCAL	QMGR M094
SYSTEM_JMS_ADMIN_QUEUE	QLOCAL	QMGR M094
SYSTEM_JMS_D_CC_SUBSCRIBER_QUEUE	QLOCAL	QMGR M094
SYSTEM_JMS_D_SUBSCRIBER_QUEUE	QLOCAL	QMGR M094
SYSTEM_JMS_MODEL_QUEUE	QMODEL	QMGR M094
SYSTEM_JMS_MD_CC_SUBSCRIBER_QUEUE	QLOCAL	QMGR M094
SYSTEM_JMS_MD_SUBSCRIBER_QUEUE	QLOCAL	QMGR M094
SYSTEM_JMS_PS_STATUS_QUEUE	QLOCAL	QMGR M094
SYSTEM_JMS_REPORT_QUEUE	QLOCAL	QMGR M094
SYSTEM_MOEXPLORER_REPLY_MODEL	QMODEL	QMGR M094
SYSTEM_PENDING_DATA_QUEUE	QLOCAL	QMGR M094
2 TEST_01	QLOCAL	QMGR M094

Command ==>
 F1=Help F2=Split F3=Exit F4=Filter F5=Refresh F6=Clusinfo
 F7=Bkwd F8=Fwd F9=SwapNext F10=Messages F11=Status F12=Cancel

ISPF – Define a new Local Queue

Complete fields, then press F8 for further fields, or Enter to define queue.

Queue name Test_02 More: +

Disposition Q G=Group, S=Shared, Q=Qmgr on M094

Description

Put enabled Y Y=Yes, N=No

Get enabled Y Y=Yes, N=No

Usage N N=Normal, X=Xmit0

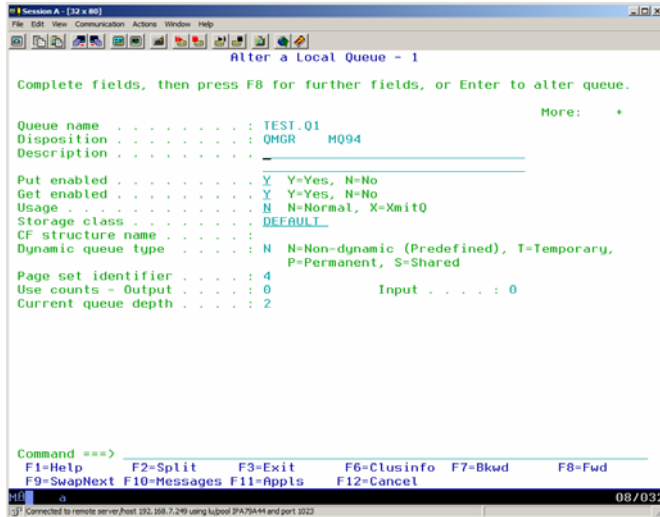
Storage class DEFAULT

CF structure name

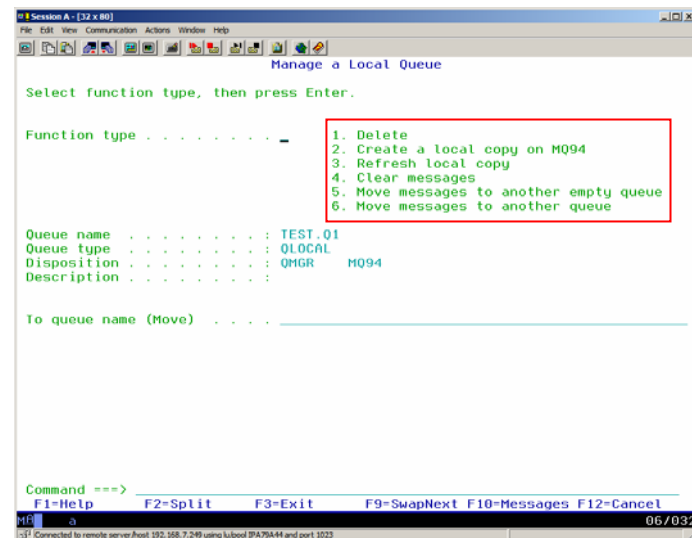
Command ==>
 F1=Help F2=Split F3=Exit F7=Bkwd F8=Fwd F9=SwapNext
 F10=Messages F12=Cancel

Check next panels

ISPF – Alter a Local Queue



ISPF – Manage a Local Queue



WMQ Explorer



WMQ Explorer

IBM WebSphere MQ Explorer - Navigator

- IBM WebSphere MQ
 - Queue Managers
 - Queue Manager Clusters
 - JMS Administered Objects

WebSphere MQ Explorer - Content

Queue Managers

Queue manager name	Command level	Queue manager status	Platform	Queue-sharing group name	De
MQ24					
QM01WIN	[Unknown]	Stopped	Windows		

Scheme: Standard for Queue Managers

Last updated: 17:16:02

Select a queue manager to show its connection details here:

WebSphere MQ Explorer - Test Results

0 errors, 0 warnings, 0 infos

Description	Object name	Category

Add a remote Queue Manager

Queue manager name	Connection type	Connection...	Channel name	Channel definition table	Refresh interval	Autoreconnect
MQ24 on 192.168.7.242(24014)	Client	192.168.7....	SYSTEM.DE...		300	No
QM01WIN	Local				15	Yes

Buttons: Hide, Add..., Show, Remove..., Close

Add a remote Queue Manager

Add Queue Manager

Specify new connection details
Provide details of the connection you want WMQ Explorer to set up

Queue manager name:

Specify connection details
 Use client channel definition table

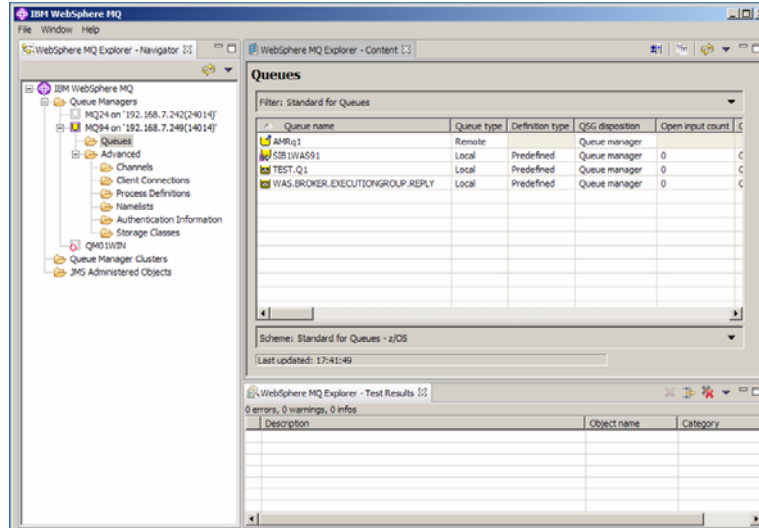
Host name or IP address:
 Port number:
 Server-connection channel:

Autoreconnect

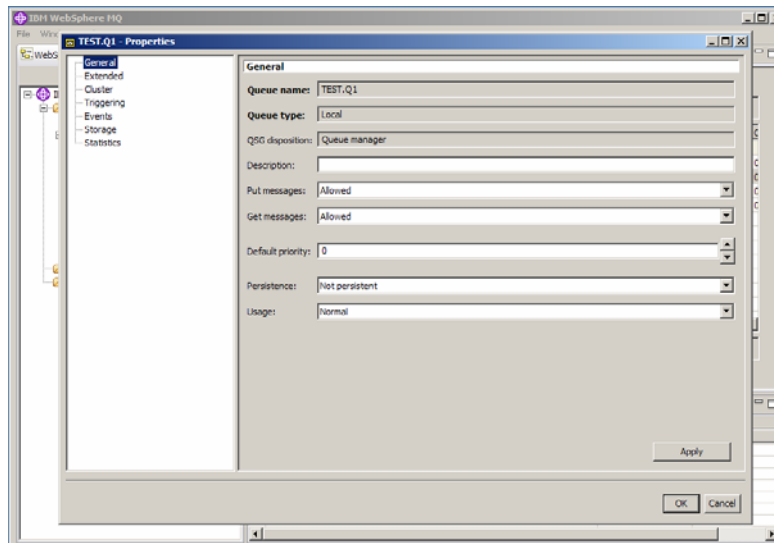
Automatically refresh information shown for this queue manager
 Refresh interval (seconds):

Buttons: < Back, Next >, Finish, Cancel

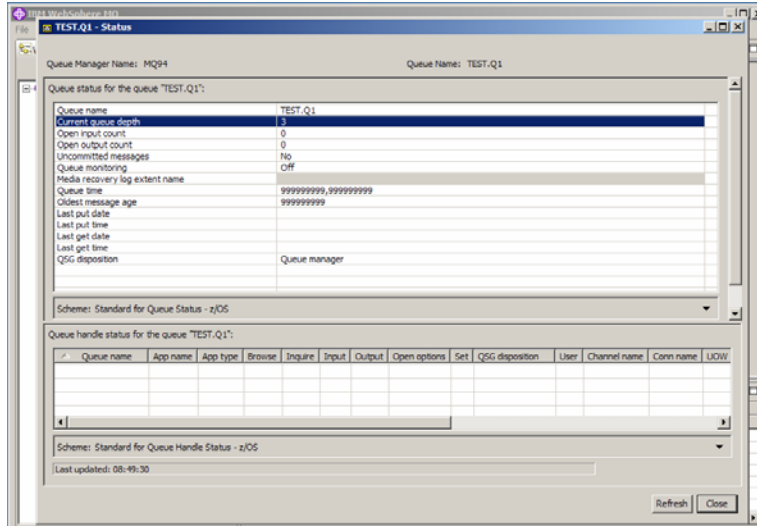
Overview of Queues



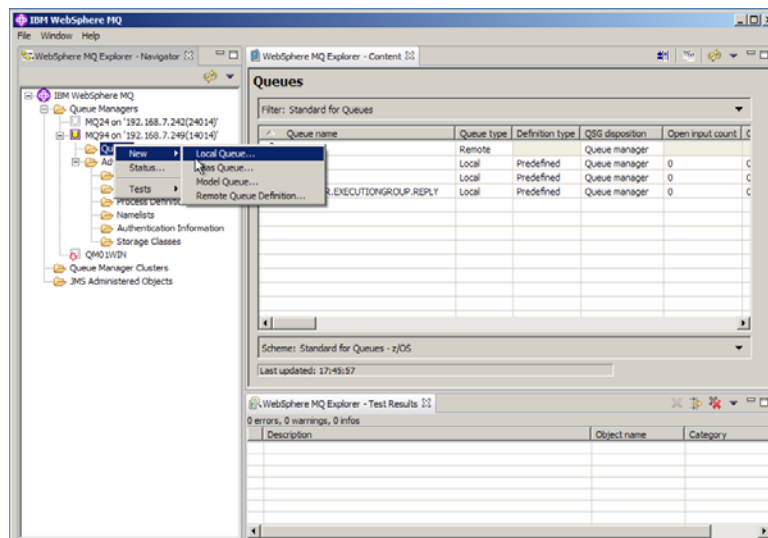
Display/Alter Queue properties



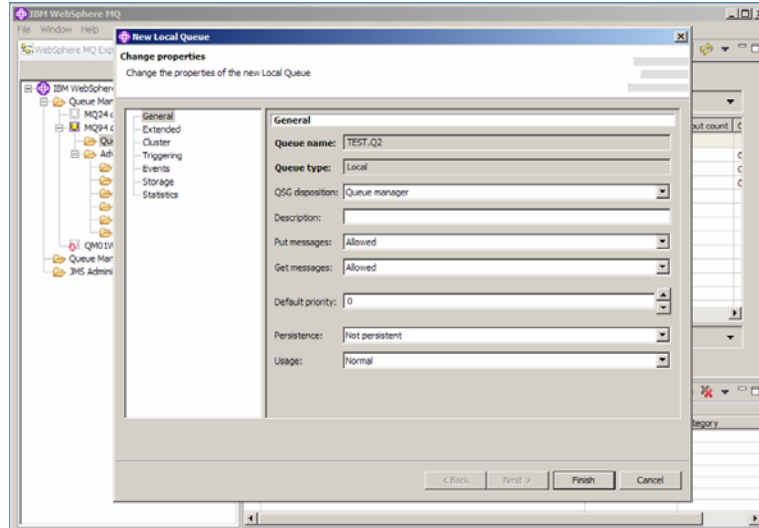
Display Queue Status



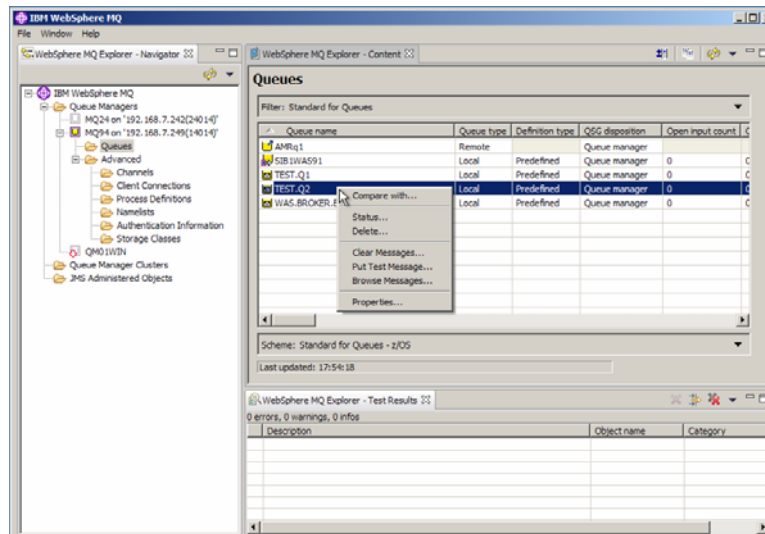
Define new Local Queue



Define properties for new Local Queue



Manage Queue



Browse messages on Queues

Queue Manager Name: MQ04
Queue Name: TEST.Q1

Position	Put date/time	User identifier	Put application name	Format	Data length	Message data
1	May 21, 2008 12:50:09 PM	AMREIN	T99JPUT		1024	XXXXXXXXXXXXXXXXXXXXXXXXXXXX
2	May 21, 2008 12:50:09 PM	AMREIN	T99JPUT		1024	XXXXXXXXXXXXXXXXXXXXXXXXXXXX
3	May 23, 2008 8:49:10 AM	WBSSTUD	WebSphere MQ Client for Java	MQSTR	5	Test1

Scheme: Standard for Messages
Last updated: 08:51:24

All available messages on the queue have been browsed. Press the refresh button for new messages.

Refresh Close